

PDF Export using INI File

Introduction:

This document describes a feature in TextMaker, PlanMaker and Presentations: using these programs to automatically create PDF files from common Office file formats without user intervention.

In the following, when we talk of "application" in general, this means TextMaker, PlanMaker or Presentations respectively.

The application can convert supported file formats to PDF format. During the PDF conversion a progressive status is shown. If errors occur while processing the INI file, a report is added to the application specific log files "tmlog.txt", "pmlog.txt" or "prlog.txt" located in "C:\Documents and settings\USER\My Documents\SoftMaker\" or the the common error file "err32.out" in "C:\" root directory. .

To use the application to create a PDF file, create an INI file and pass it to the application as follows:

```
TextMaker:
textmaker.exe /pdf:"myinifile.ini"

PlanMaker:
planmaker.exe /pdf:"myinifile.ini"

SoftMaker Presentations:
presentations.exe /pdf:"myinifile.ini"
```

We recommend using quotations marks around the filename but they are optional.

The INI file is expected to be in UTF8 format. The first three bytes must have the values 0xEF 0xBB 0xBF.

This INI file is separated into "sections". Sections start with their section name in brackets. Below the section name, several "items" may be listed. Items may (but must not) have a value. Items without value (or missing items) are set to default within the application.

Example:

[pdf preferences]	This is a section.
AutoShapeQuality=	This is an item belonging to the section above without value.
PageExport=ALL	This is an item belonging to the section above with string value.
CreateTableContents=1	This is an item belonging to the section above with logic value.
IncludeLevels=4	This is an item belonging to the section above with integer value.

This document list all available sections and items.

If you leave a value empty or pass an invalid value for an item, a default value is used instead. For example "PageExport=xyz" will be handled as if "PageExport=ALL" had been specified. The appli-

cation will not show a message box, so no user interaction is needed.

The pictures below show English dialogs and explain everything in detail.

Remark for PlanMaker: You can only export cell areas of a sheet which are part of the print range if you have defined it.

Sections:

The first section is needed to handle the input and output files. There are four other sections which are identical to the property sheet pages. Please remember that the “General” section is application specific. All other sections are identically for the named applications.

Files

Section	[pdf files]		
Item	Values	Enabled	Description
AppFile	<i>String with complete path and filename.</i> (Default: Empty string.)	Yes & tested.	Name of the application file with complete path which is the input file. For example “C:\MyDocs\MyFile.doc”. If file does not exist, PDF conversion is aborted.
PdfFile	<i>String with complete path and filename.</i> (Default: See description.)	Yes & tested.	Name of the PDF output file with complete path. For example “C:\MyDocs\MyFile.pdf”. If the string is empty, the PDF filename is built from the value of the item “AppFile”. “*.pdf” file type is always set.

Example:

```
[pdf files]
AppFile=C:\Users\<UserProfile>\Documents\MyDocument.doc
PdfFile=C:\Users\<UserProfile>\Documents\MyDocument.pdf
```

General (TextMaker)

PDF Export

General | Preferences | View | Protection

Export range

☒ All

☐ Current page

☐ Pages: 1-13

Pages to export: All selected pages

Table of contents

☒ Create table of contents

Include levels: 1 to 9

Forms

☐ Create interactive form

Accessibility

☒ Create tagged PDF

Reviewing

☐ Export comments

☐ Export tracked changes

OK Cancel

Section	[pdf general textmaker]		
Item	Values	Enabled	Description
PageRange	1-2;4-10;13	Yes & tested.	Page range to export to PDF. This can be a listing of page numbers and ranges. Or all pages. (The option "current page" that is offered in the dialog makes no sense here and is not available.)
	ALL (Default)	Yes & tested.	
PageExport	ODD	Yes & tested.	Filter for page export. Restricts export to odd or even pages.
	EVEN	Yes & tested.	
	ALL (Default)	Yes & tested.	
CreateTableContents	1 or 0 (Default: 0)	Yes & tested.	Create table of contents.
IncludeLevels	1 to 9 (Default: 1)	Yes & tested.	Include levels for the table of contents.

CreateInteractiveForm	1 or 0 (Default: 0)	Yes & tested.	Create an interactive form.
TaggedPdf	1 or 0 (Default: 1)	Yes & tested.	Add tags to the PDF file.
ExportComments	1 or 0 (Default: 0)	Yes & tested.	Export comments to the PDF file.
ExportChanges	1 or 0 (Default: 0)	Yes & tested.	Export tracked changes to the PDF file.

Example:

```
[pdf general textmaker]
PageRange=1-2;4
PageExport=ALL
CreateTableContents=1
IncludeLevels=3
CreateInteractiveForm=0
TaggedPdf=1
ExportComments=0
ExportChanges=0
```

General (PlanMaker)

The screenshot shows the 'PDF Export' dialog box with the following settings:

- Export:**
 - ☐ Whole document
 - ☐ Only selected cells
 - ☒ Current worksheet
 - ☐ Only selected worksheets
 - ☐ Only the following worksheets:
 - ☐ Sheet1
- ☐ Ignore print range
- Pages:**
 - ☒ All
 - ☐ Pages: 1-1
- Pages to export:** All selected pages
- Options:**
 - ☒ Create a bookmark for each worksheet
- Accessibility:**
 - ☒ Create tagged PDF

Buttons: OK, Cancel

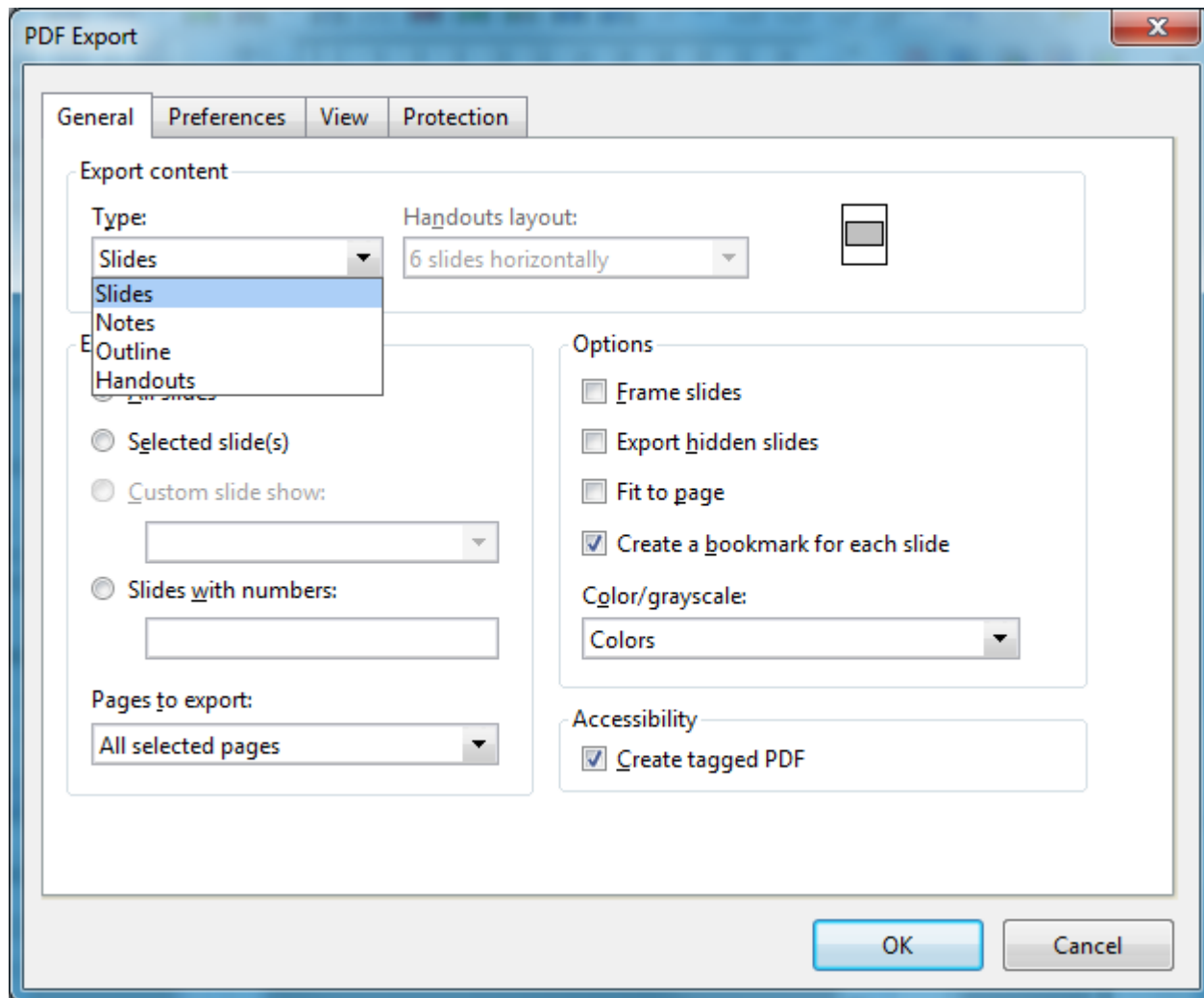
Section	[pdf general planmaker]		
Item	Values	Enabled	Description
ExportRange	DOCUMENT (Default)	Yes & tested.	Filter for the export range. Select if you want to export the document, selected cells, the current worksheet or selected worksheets.
	AREACELLS	Yes & tested.	
	SELCELLS	Yes & tested.	<p>If you use AREACELLS, you must give a cell rectangle by string using the “AreaCells” item. You can only select one cell rectangle. If the “AreaCells” items value is empty, PDF conversion is stopped.</p> <p>If you use SELCELLS, you can convert user selected cells (per mouse and keyboard) within the document. This can be more than one cell area. However all cell areas must be on the current sheet. Each selected cell area is printed to its own page within the PDF document.</p> <p>If you use MARKEDWORKSHEETS, you must select one or more worksheets by string using the “MarkedWorksheets” item. If the “MarkedWorksheets” items value is empty, PDF conversion is stopped. <i>(For clarification: These are the marked worksheets (4th radio button), not the user selected worksheets using mouse or keyboard.)</i></p>
	CURWORKSHEET	Yes & tested.	
	MARKEDWORKSHEETS	Yes & tested.	
AreaCells	worksheet!coordinates (Default: Empty string.)	Yes & tested.	<p>If you choose an area of cells as export range, you have to give one worksheet and the cell rectangle area. Example: myworksheet!C2:D4</p>
MarkedWorksheets	worksheet1; worksheet2; (Default: Empty string.)	Yes & tested.	<p>If you select “selected” worksheets, you have to give a list of worksheets. Worksheets are separated using a semicolon. You cant use semicolons in worksheet names.</p>
PageRange	1-2;4-10;13	Yes & tested.	<p>Page range to export to PDF. This can be a listing of pages or page ranges. Or all pages.</p>
	ALL (Default)	Yes & tested.	
PageExport	ODD	Yes & tested.	<p>Filter for page export. Restricts output to odd or even pages.</p>

	EVEN	Yes & tested.	
	ALL (Default)	Yes & tested.	
TaggedPdf	1 <i>or</i> 0 (Default: 1)	Yes & tested.	Export tags to the PDF file.
CreateBookmark	1 <i>or</i> 0 (Default: 0)	Yes & tested.	Create a bookmark for each worksheet.
IgnorePrintRange	1 <i>or</i> 0 (Default: 0)	Yes & tested.	Normally, only cells in the print range defined by the user are exported to PDF. Activating this option makes the PDF export ignore the print range.

Example:

```
[pdf general planmaker]
ExportRange=DOCUMENT
SelCells=myworksheet!C1:D2
SelWorksheets=worksheet1;worksheet2
PageRange=ALL
PageExport=ALL
TaggedPdf=1
CreateBookmark=0
IgnorePrintRange=0
```

General (Presentations)



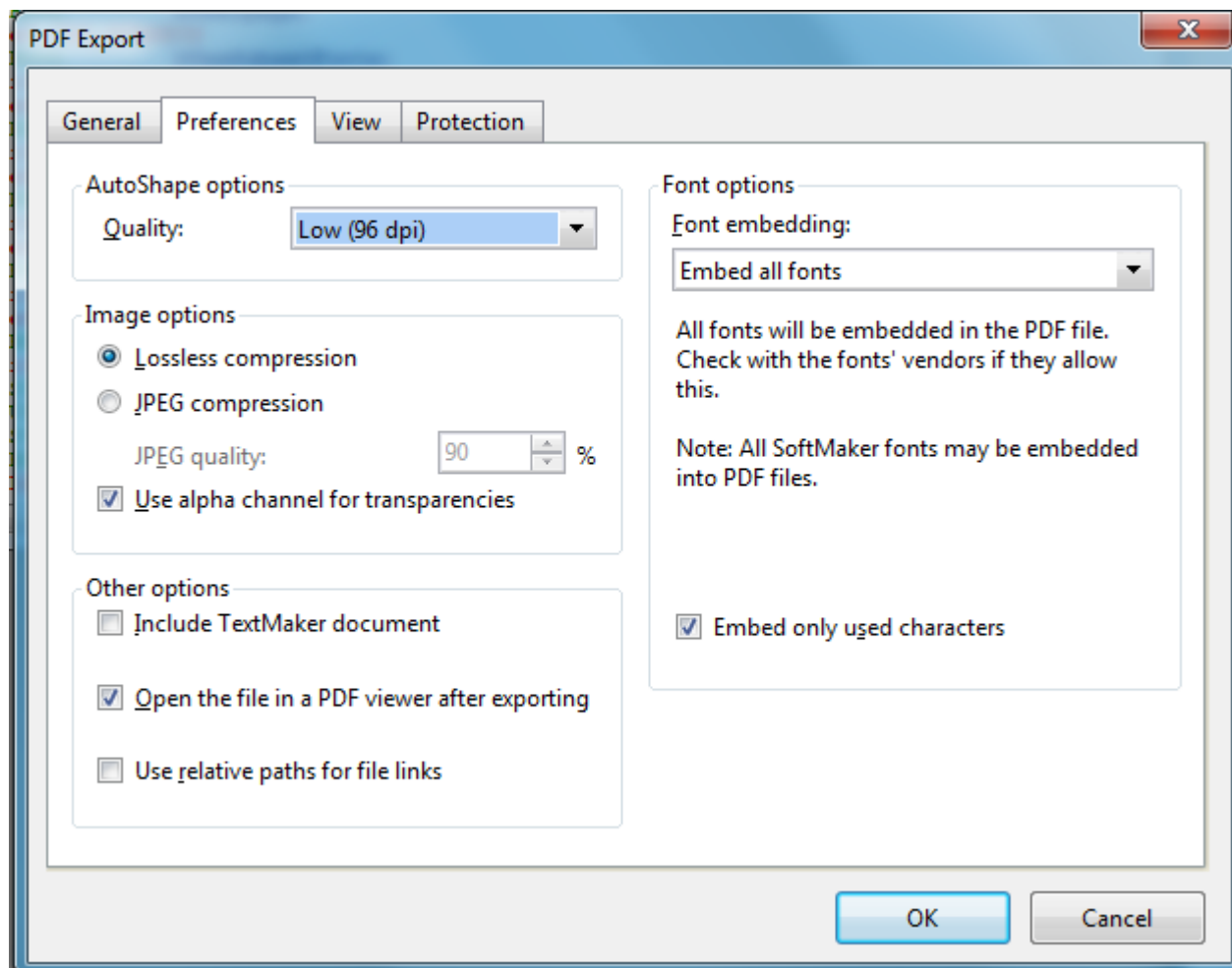
Section	[pdf general presentations]		
Item	Values	Enabled	Description
ExportType	SLIDES (Default)	Yes & tested.	Filter for the document display. You can choose slides, notes, outline or handouts as display type. Using SLIDES you should set a value for the item ExportRange. Using HANDOUTS you should set a value for the item Handouts.
	NOTES	Yes & tested.	
	HANDOUTS	Yes & tested.	
Handouts	1 or 2 or 3 or 4 or 6 or 9 (Default: 1)	Yes & tested.	If the export type is “handouts” select how many fit to one page. For 4, 6 and 9 you have to specify the alignment, too (see element "Alignment" below).
Alignment	HORIZONTALLY (Default)	Yes & tested.	Alignment for export type “handouts”. Only available for 4, 6 or 9 handouts.

	VERTICALLY	Yes & tested.	
ExportRange	ALLSLIDES (Default)	Yes & tested.	Filter for the slides you want to export. You can select all slides or set a number of slides. (Selecting the current slide or selected slides is not possible.) If you selected “NRSLIDES” you must give a value to the item “SlideNumbers”. If the string is empty PDF conversion is stopped.
	NRSLIDES	Yes & tested.	
SlideNumbers	1-2;4 (Default: Empty string.)	Yes & tested.	Numbers of slides to export.
PageExport	ODD	Yes & tested.	Filter for page export. Restricts output to odd or even pages.
	EVEN	Yes & tested.	
	ALL (Default)	Yes & tested.	
ExportHiddenSlides	1 <i>or</i> 0 (Default: 0)	Yes & tested.	Export hidden frames?
Color	COLORS (Default)	Yes & tested.	Choose the colour of the PDF document.
	GREYSCALE	Yes & tested.	
	BLACKWHITE	Yes & tested.	
TaggedPdf	1 <i>or</i> 0 (Default: 1)	Yes & tested.	Export tags to the PDF file.
CreateBookmark	1 <i>or</i> 0 (Default: 0)	Yes & tested.	Create a bookmark for each slide.

Example:

```
[pdf general presentations]
ExportType=HANDOUTS
Handouts=6
Alignment=HORIZONTALLY
ExportRange=ALLSLIDES
SlideNumbers=1-2;4
PageExport=ALL
FrameSlides=1
ExportHiddenSlides=0
FitToPage=1
Color=GREYSCALE
TaggedPdf=1
CreateBookmark=0
```


Preferences



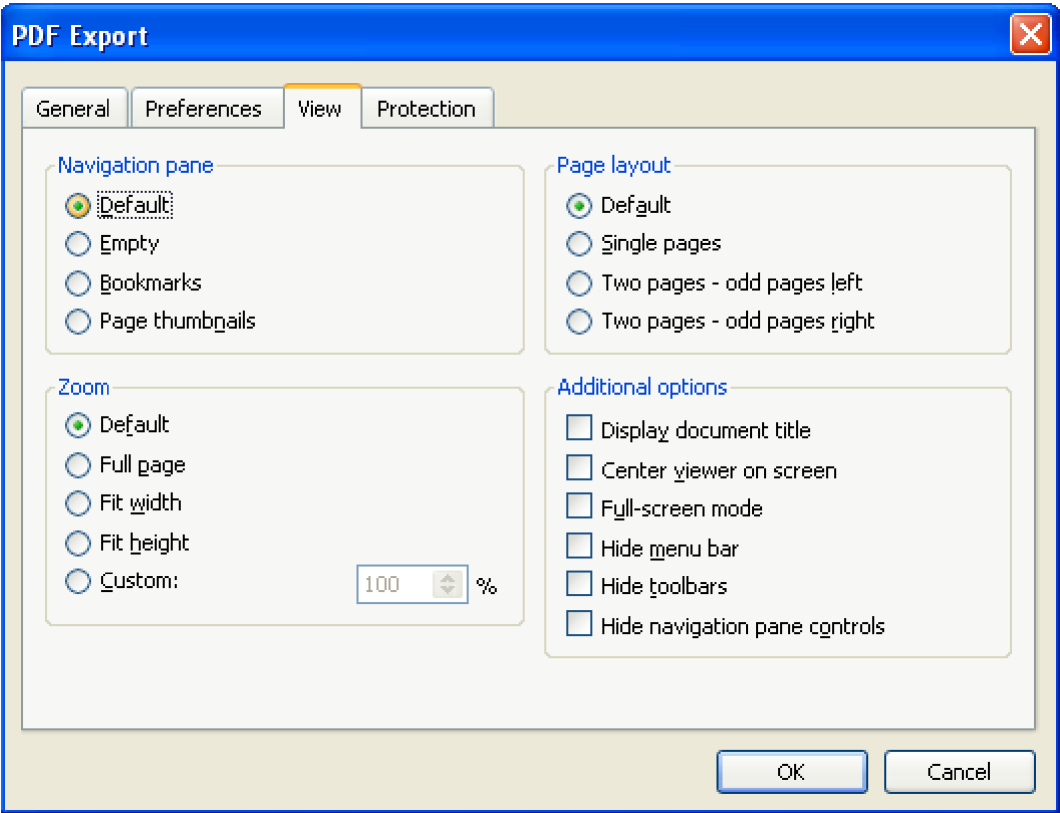
Section	[pdf preferences]		
Item	Values	Enabled	Description
AutoShapeQuality	96 (Default)	Yes & tested.	Resolution for auto shapes in dpi.
	150	Yes & tested.	
	300	Yes & tested.	
	600	Yes & tested.	
Compression	LOSSLESS	Yes & tested.	Compression variant.
	JPEG (Default)	Yes & tested.	
JPEGQuality	1 to 100 (Default: 90)	Yes & tested.	Compression value for JPEG variant. Value in percentile.
AlphaChannel	1 or 0 (Default: 0)	Yes & tested.	Use alpha channel for transparencies.

IncludeDocument	1 <i>or</i> 0 (Default: 0)	Yes & tested.	Include application document.
OpenPDFViewer	1 <i>or</i> 0 (Default: 0)	Yes & tested.	Open PDF viewer after conversion.
FontEmbedding	NONE	Yes & tested.	Font embedding variant. Either none, vendor public fonts or all fonts. Embedding fonts will enlarge your file.
	VENDOR	Yes & tested.	
	ALL (Default)	Yes & tested.	
EmbedOnlyUsedChars	1 <i>or</i> 0 (Default: 1)	Yes & tested.	Font embedding for all or only for used characters. Reduces file's size.
RelativeLinks	1 <i>or</i> 0 (Default: 0)		Use relative links for links to files.

Example:

```
[pdf preferences]
AutoShapeQuality=150
Compression=JPEG
JPEGQuality=90
AlphaChannel=0
IncludeDocument=1
OpenPDFViewer=0
FontEmbedding=ALL
EmbedOnlyUsedChars=1
RelativeLinks=0
```

View



Section	[pdf view]		
Item	Values	Enabled	Description
NavigationPane	DEFAULT (Default)	Yes & tested.	Sets the format of the navigation pane.
	EMPTY	Yes & tested.	
	BOOKMARKS	Yes & tested.	
	THUMBNAILS	Yes & tested.	
Zoom	DEFAULT (Default)	Yes & tested.	Set the zoom mode.
	FULLPAGE	Yes & tested.	
	FITWIDTH	Yes & tested.	
	FITHEIGHT	Yes & tested.	
	CUSTOM	Yes & tested.	

ZoomCustom	10 to 640 (Default: 100)	Yes & tested.	Zoom size in percentile for custom zoom mode.
PageLayout	DEFAULT (Default)	Yes & tested.	Page layout. Either one single page, or two pages. For two pages layout, the odd (first page) can be left or right aligned.
	SINGLEPAGES	Yes & tested.	
	TWOPAGESODDLEFT	Yes & tested.	
	TWOPAGESODDRIGHT	Yes & tested.	
DisplayDocTitle	1 or 0 (Default: 1)	Yes & tested.	Display document title.
CenterViewerScreen	1 or 0 (Default: 0)	Yes & tested.	Center the PDF viewer screen.
FullScreenMode	1 or 0 (Default: 0)	Yes & tested.	Full screen mode.
HideMenuBar	1 or 0 (Default: 0)	Yes & tested.	Hide the menu bar.
HideToolbars	1 or 0 (Default: 0)	Yes & tested.	Hide the tool bars.
HideNavigationPane	1 or 0 (Default: 0)	Yes & tested.	Hide the navigation pane controls.

Example:

```
[pdf view]
NavigationPane=EMPTY
Zoom=FULLPAGE
ZoomCustom=90
PageLayout=SINGLEPAGES
DisplayDocTitle=1
CenterViewerScreen=0
FullScreenMode=1
HideMenuBar=1
HideToolbars=1
HideNavigationPaneControls=0
```

Protection

PDF Export [X]

General Preferences View **Protection**

Encryption type:
 128 bit encryption [v]

Password to open the document:
 *** (empty = no password required)

Password to set permissions:
 *** (empty = full permissions)

Permissions

- ☒ Allow users to print the document
- ☒ Allow users to copy text and pictures from the document
- ☒ Allow users to modify the document
- ☒ Allow users to modify annotations and form fields
- ☒ Allow users to fill in existing form fields
- ☒ Allow users to assemble the document

OK Cancel

Section	[pdf protection]		
Item	Values	Enabled	Description
Encryption	0 (Default)	Yes & tested.	Encryption of the PDF file in bits. 0 means none. Without encryption the passwords are not needed.
	40	Yes & tested.	
	128	Yes & tested.	
PasswordOpen	<i>Any string.</i> (Default: Empty string.)	Yes & tested.	Password used to open the document. If empty, no password is used. (Password is visible here!)
PasswordPermissions	<i>Any string.</i> (Default: Empty string.)	Yes & tested.	Password used to set the user permissions. If empty, no password is used. You need a password to set the user permissions below. (Password is visible here!)
UserPrint	1 or 0 (Default: 0)	Yes & tested.	Permission: User may print the PDF file. (If printing is enabled a hacker may print the PDF to a PDF printer again. This will delete any restrictive permission settings below.)
UserCopyTxtPic	1 or 0 (Default: 0)	Yes & tested.	Permission: User may copy & paste text and pictures from the PDF file.

UserModifyDoc	1 <i>or</i> 0 (Default: 0)	Yes & tested.	Permission: User may modify the PDF document.
UserModifyForms	1 <i>or</i> 0 (Default: 0)	Yes & tested.	Permission: User may modify the PDF forms.
UserFillForms	1 <i>or</i> 0 (Default: 0)	Yes & tested.	Permission: User may fill the PDF forms. (128 bit encryption only.)
UserAssembleDoc	1 <i>or</i> 0 (Default: 0)	Yes & tested.	Permission: User may assemble a new PDF document. (128 bit encryption only.)

Example:

```
[pdf protection]
Encryption=40
PasswordOpen=MyOpenPassword
PasswordPermissions=MyPermissionsPassword
UserPrint=1
UserCopyTxtPic=0
UserModifyDoc=0
UserModifyForms=1
UserFillForms=1
UserAssembleDoc=1
```